

# ManEx Minute

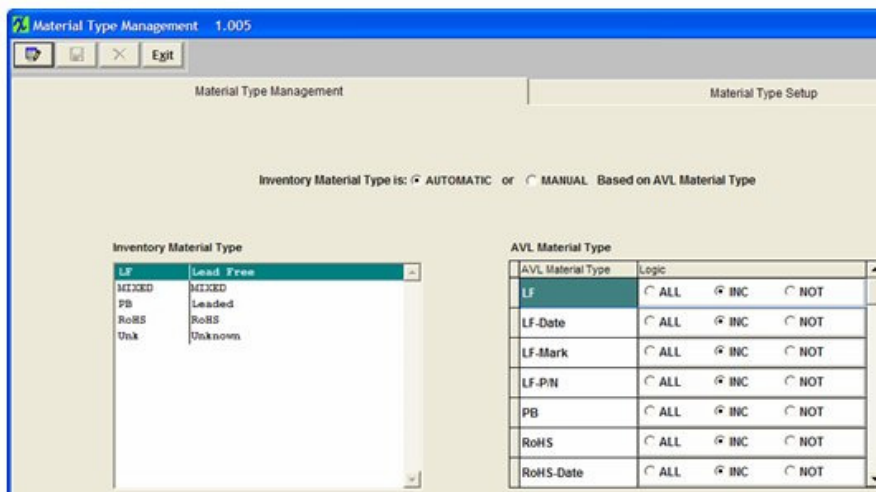


Take a minute to save time with ManEx.

## Dear Valued Customer,

Did you know that ManEx v9.4 will automatically manage your inventory material type?

Based on the settings in system setup, ManEx can automatically set and adjust the material type for the ManEx part number based on the AVL Material Type loaded.



First create the Inventory Material Type under system setup in much the same way as the AVL Material Types are created. Then define the logic by which ManEx will manage the Inventory Material Types.

If you select to have ManEx automatically manage the Inventory Material Type, it will adjust the inventory material type as AVLs are added, updated, and removed.

This automated control can save hundreds of man hours and allow you to know in a glance the types of AVLs loaded under any internal part number.

For more information on Inventory Control Management, please refer to the [Inventory Control Management](#) Manual.

This is just another way we are developing ManEx with YOU in mind.

Sincerely,

David Sharp  
Regional Vice President

ManEx, Inc.  
212 East State Road 73 #162  
Saratoga Springs, UT 84043

\*If you have another approach that you think works better, [click here](#) and tell us about it.

\*To add a name to this email list, please reply with the name and email addresses.

\*To remove your name from this mailing list, please [click here](#).

\*Questions or comments? Email us at [cs@manex.com](mailto:cs@manex.com) or call 651-344-4915