

ManEx Minute

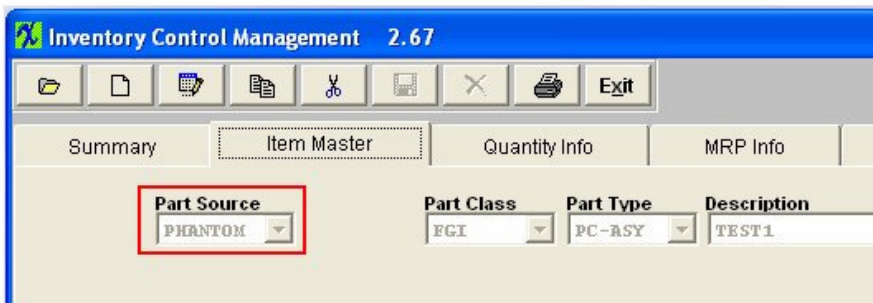
Take a minute to save time with ManEx.



Dear Valued Customer,

Did you know that ManEx gives you the ability to define and maintain groups of parts common to multiple BOMS?

Users create a phantom assembly in the Inventory Control Module on the Item Master Screen.



Although it has many uses, the Phantom assembly is an effective tool to manage groups of components common to multiple BOMS.

The Phantom assembly will allow

users to pull the kit just as though the components were part of the top level assembly. Additionally, making changes on a phantom assembly will automatically update every BOM calling for the phantom assembly. This can save hours for each change.

For more information on Part Source, please refer to the [Part Source](#) Manual.

This is just another way we are developing ManEx with YOU in mind.

Sincerely,

David Sharp
Regional Vice President

ManEx, Inc.
212 East State Road 73 #162
Saratoga Springs, UT 84043

*If you have another approach that you think works better, [click here](#) and tell us about it.

*To add a name to this email list, please reply with the name and email addresses.

*To remove your name from this mailing list, please [click here](#).

*Questions or comments? Email us at cs@manex.com or call 651-344-4915