

ManEx Minute

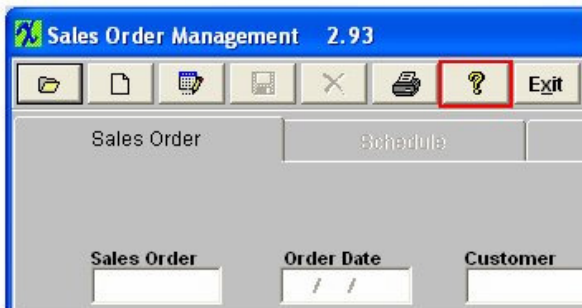
Take a minute to save time with ManEx.



Dear Valued Customer,

Did you know that ManEx is now integrating the manuals into each module?

ManEx has been developing the online manuals over the last several months and has seen many positive results from this effort. Taking this powerful tool to the next level, ManEx is making this useful information even more accessible.



Starting with the next release of ManEx, users will be able to access the manuals directly from the current module. This button has already been incorporated into many screens and will be added throughout ManEx as the online manuals are completed.

Clicking the "?" button will take the user to the module's manual. From there, users will be able to access the Prerequisites, Module Overview, Fields & Definitions, How To..., Module Reports, and related ManEx Minutes. Best of all, because this information is stored in our online knowledge base, it will remain current with the latest version of ManEx.

Sales Order Management

- ▾ Prerequisites
- ▾ Introduction
- ▾ Fields & Definitions
- ▾ How To
- ▾ Reports
- ▾ ManEx Minutes

By providing this information quickly and easily to the end users, ManEx is able to reduce the learning curve and help ensure a reduced implementation time frame. Additionally, new employees will be able to access this information and learn to use ManEx in significantly less time and at significantly less cost.

For more information on the online manuals, please refer to our [Knowledge Base](#).

This is just another way we are developing ManEx with YOU in mind.

Sincerely,

David Sharp
Regional Vice President

ManEx, Inc.
7282 55th Ave. East
PMB 162
Bradenton, FL 34203

*If you have another approach that you think works better, [click here](#) and tell us about it.

*To add a name to this email list, please reply with the name and email addresses.

*To remove your name from this mailing list, please [click here](#).

*Questions or comments? Email us at cs@manex.com or call 651-344-4915