

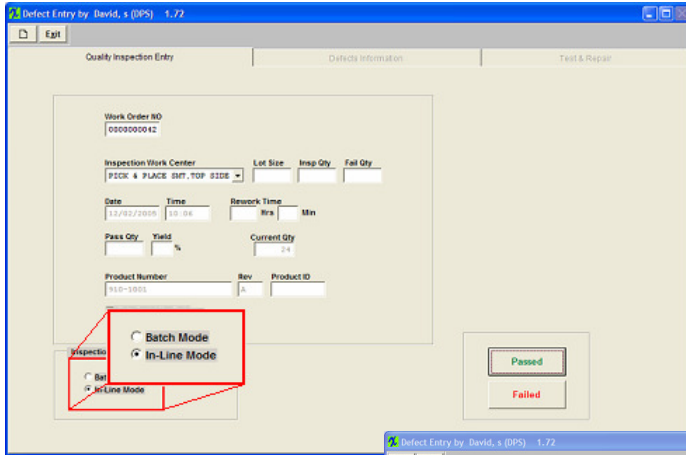
ManEx Minute

Take a minute to save time with ManEx.



Dear Valued Customer,

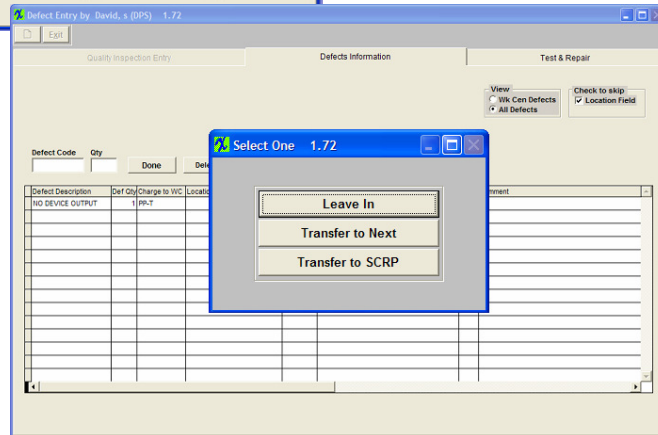
Did you know that ManEx will allow users to gather quality data real-time from the shop floor?



The Statistical Quality Control Module (SQC) provides this capability. By switching to “In-Line Mode” users are able to document each assembly as it passes through a work center’s inspection point. This can be done with or without a serial number. This ensures that ManEx contains accurate information for each assembly produced.

If an assembly fails, ManEx will prompt the user to document the failure. For future reporting, this can be tied to a work center, employee, reference designator, and even a part manufacturer.

Additionally, ManEx will allow users to keep the assembly in that work center, transfer it to the next center, or scrap the entire assembly as needed.



To learn more of the great features in the module, please refer to the [Statistical Quality Control Module Manual](#).

This is just another way we are developing ManEx with YOU in mind.

Sincerely,

David Sharp

David Sharp
Regional Vice President

ManEx, Inc.
7282 55th Ave. East
PMB 162
Bradenton, FL 34203

*If you have another approach that you think works better, [click here](#) and tell us about it.

*To add a name to this email list, please reply with the name and email addresses.

*To remove your name from this mailing list, please [click here](#).

*Questions or comments? Email us at cs@manex.com or call 651-344-4915