

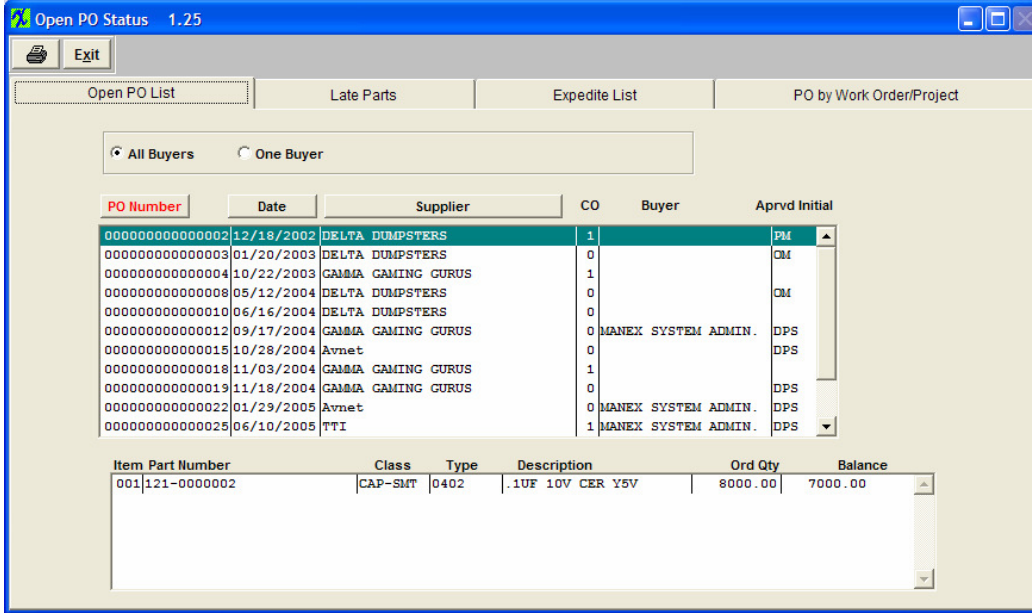
# ManEx Minute

Take a minute to save time with ManEx.



**Dear Valued Customer,**

Did you know that ManEx provides a quick summary of all components on Order for better materials management?



The Open Order Status screen will display all parts currently on order. Each tab will filter the open order list for better decision making. The **“Open PO List”** shows all parts on order and can be filtered by the buyer. The **“Late Parts”** list will display all parts that are past due. The **“Expedite List”** will show all parts due by the user specified date. The **“PO by Work Order/Project”** will display all parts currently on order for the specified WO or Project.

By bringing all of this information into one screen, ManEx enables the buyers to stay on top of their orders to help ensure production always has the parts before they are needed.

To learn more of the great features in the module, please refer to the [Purchase Order Management](#) Manual.

This is just another way we are developing ManEx with YOU in mind.

Sincerely,

*David Sharp*

David Sharp  
Regional Vice President

ManEx, Inc.  
7282 55th Ave. East  
PMB 162  
Bradenton, FL 34203

\*If you have another approach that you think works better, [click here](#) and tell us about it.

\*To add a name to this email list, please reply with the name and email addresses.

\*To remove your name from this mailing list, please [click here](#).

\*Questions or comments? Email us at [cs@manex.com](mailto:cs@manex.com) or call 651-344-4915