

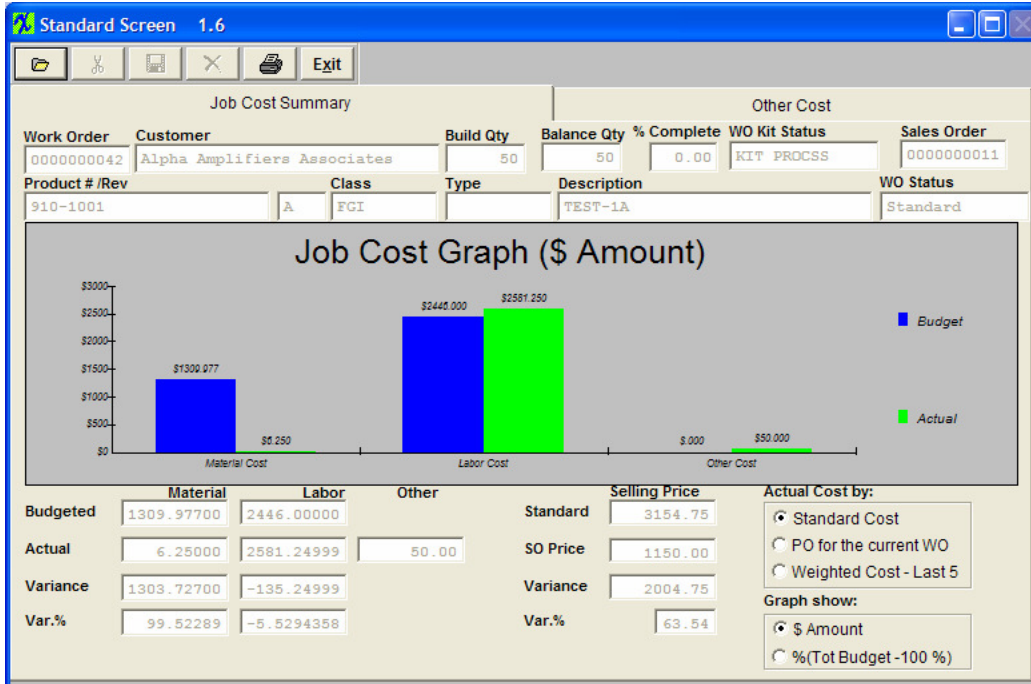
ManEx Minute

Take a minute to save time with ManEx.



Dear Valued Customer,

Did you know that ManEx will calculate and display Job Costing in an easy to read screen?



Have you ever wondered how much attrition you had on a given job? How about if you used too much labor to complete the project? Using the ManEx Job Costing (JC) module you can get answers to these questions and many others.

This module allows users to calculate variances by Standard Cost, Weighted Cost, and actual PO cost (if the PO item is allocated to the WO). Users can also view detailed listings of the budgeted and actual costs for both materials and labor.

To learn more of the great features in the module, please refer to the [Job Costing Module](#) Manual.

This is just another way we are developing ManEx with YOU in mind.

Sincerely,

David Sharp

David Sharp
Regional Vice President

ManEx, Inc.
7282 55th Ave. East
PMB 162
Bradenton, FL 34203

*If you have another approach that you think works better, [click here](#) and tell us about it.

*To add a name to this email list, please reply with the name and email addresses.

*To remove your name from this mailing list, please [click here](#).

*Questions or comments? Email us at cs@manex.com or call 651-344-4915

*To view the latest ManEx Minute on-line [click here](#).