



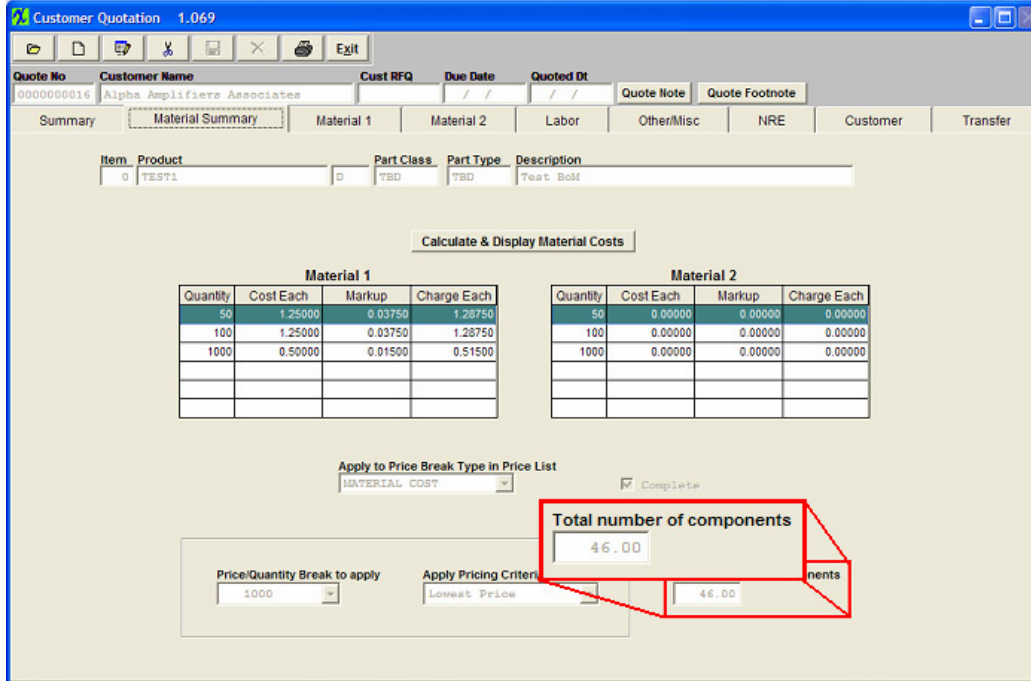
ManEx Minute

Take a minute to save time with ManEx.



Dear Valued Customer,

Did you know that the Quote Module (QOT) tracks the total number of component placements and provides that information to users?



In the lower right corner of the “Material Summary” tab users can view the current total number of component placements on the selected Bill of Material.

This information is often helpful in preparing the quote. Since it is continually updated users can always know the total number of parts required for the current design.

To learn more of the great features in the module, please refer to the [Quote Management](#) Manual.

This is just another way we are developing ManEx with YOU in mind.

Sincerely,

David Sharp

David Sharp
Regional Vice President

ManEx, Inc.
7282 55th Ave. East
PMB 162
Bradenton, FL 34203

*If you have another approach that you think works better, [click here](#) and tell us about it.

*To add a name to this email list, please reply with the name and email addresses.

*To remove your name from this mailing list, please [click here](#).

*Questions or comments? Email us at cs@manex.com or call 651-344-4915