



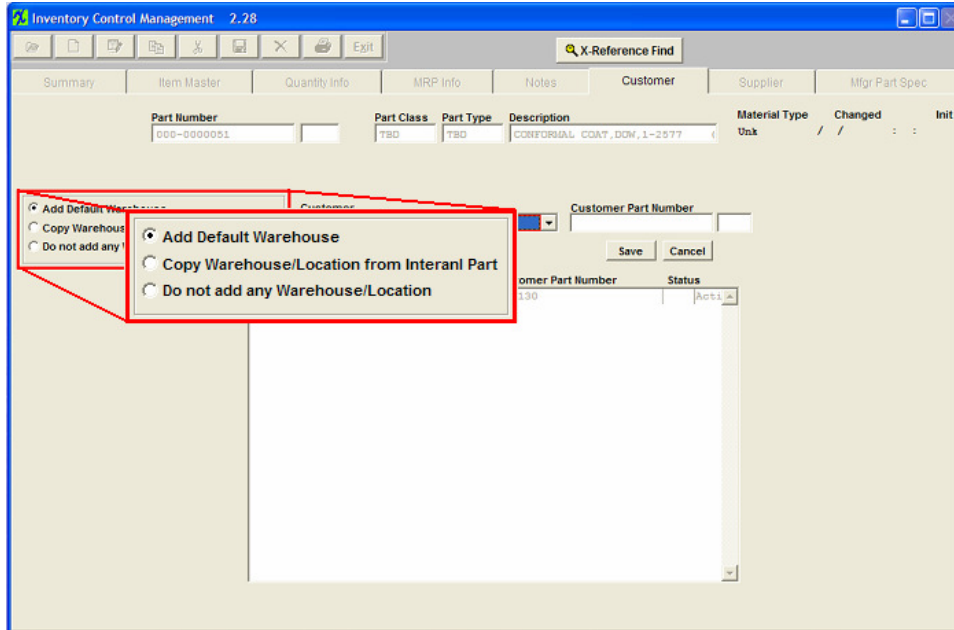
# ManEx Minute

Take a minute to save time with ManEx.



**Dear Valued Customer,**

Did you know that in ManEx v8.5 and above users have the ability to control how and when the warehouse is created for new customer part numbers?



On the “Customer” tab in the Inventory Control Management Module a new box will appear after the user edits the record and clicks the “Add” button to add a new customer part number. The three options in this new box are: “Add Default Warehouse”, “Copy Warehouse/Location from Internal Part”, and “Do not add any Warehouse/Location”.

By selecting the appropriate option, users are able to quickly create a new part for a customer and simultaneously setup the warehouse/location information for that part.

To learn more of the great features in the module, please refer to the [Inventory Control Management](#) Manual.

This is just another way we are developing ManEx with YOU in mind.

Sincerely,

*David Sharp*

David Sharp  
Regional Vice President

ManEx, Inc.  
7282 55th Ave. East  
PMB 162  
Bradenton, FL 34203

\*If you have another approach that you think works better, [click here](#) and tell us about it.

\*To add a name to this email list, please reply with the name and email addresses.

\*To remove your name from this mailing list, please [click here](#).

\*Questions or comments? Email us at [cs@manex.com](mailto:cs@manex.com) or call 651-344-4915