



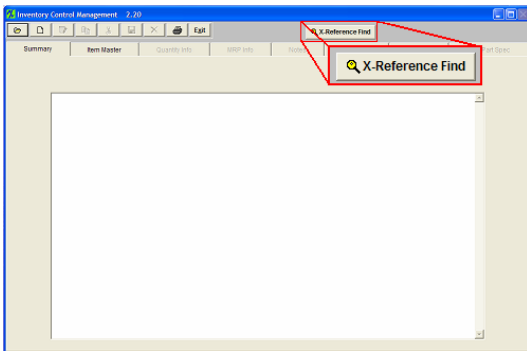
ManEx Minute

Take a minute to save time with ManEx.



Dear Valued Customer,

Did you know that ManEx has recently upgraded the part number search capabilities? In ManEx v8.1 and higher users are able to quickly locate parts within ManEx based on even partial information about the part.

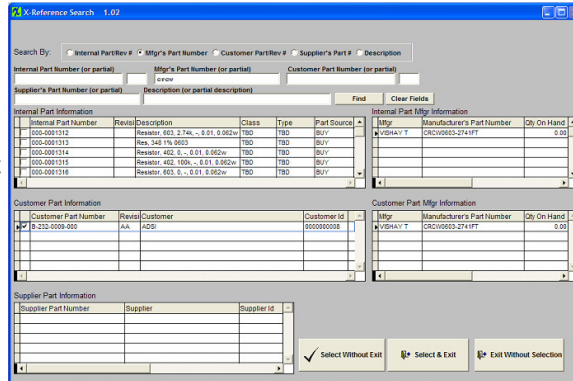


From the “Inventory Control Management” screen users can select the “X-Reference Find” button to open the improved Part Cross Reference Screen.

With this screen, users can find and open any part within ManEx, and it doesn't matter if the user has complete information or not. By knowing even part of the internal part number, customer part number, description, supplier part number, and manufacturer part number

ManEx will create a list of all parts within ManEx matching the search criteria.

To take it one step further, users can open the part number directly from this screen. Selecting the internal part number will open the inventory control module to the internal part. Selecting the customer's part number will open the inventory control module to the customer's consigned part number.



This simple addition can save hours per week by bring users directly to the desired information.

This is just another way we are developing ManEx with YOU in mind.

Sincerely,

David Sharp

David Sharp
Regional Vice President

ManEx, Inc.
7282 55th Ave. East
PMB 162
Bradenton, FL 34203

To remove your name from this mailing list, please [click here](#).

Questions or comments? E-mail us at cs@manex.com or call 651-344-4915