



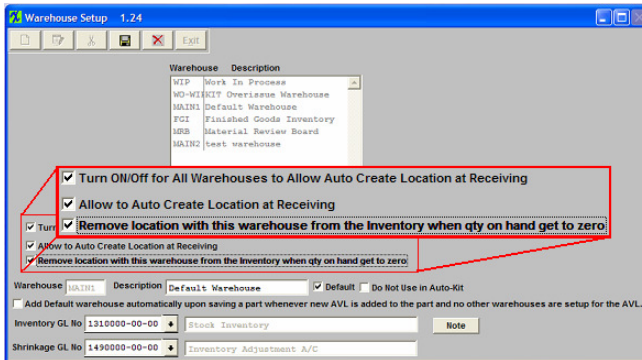
ManEx Minute

Take a minute to save time with ManEx.



Dear Valued Customer,

Did you know that ManEx has recently upgraded the warehouse capabilities in our already powerful ERP? In ManEx v8.1 and higher users are able to automatically create new locations while receiving parts into inventory. This added flexibility increases efficiency and system accuracy.



Turn ON/Off for All Warehouses to Allow Auto Create Location at Receiving box - **CHECKING** this box will “Allow Auto Create Location at Receiving” for all warehouses listed in Warehouse setup. **UNCHECKING** it will not “Allow Auto Create Location at Receiving” for any warehouses listed in warehouse setup.

Allow to Auto Create Location at Receiving box - **CHECKING** this box will allow users to create a location at the PO level or PO Receiving level for this warehouse. **UNCHECKING** causes ManEx to automatically assign the default warehouse upon saving the record.

Remove location with this warehouse from the Inventory when qty on hand gets to zero BOX (This will only be available if user checks the “Allow to Auto Create Location at Receiving” box)- **CHECKING** this box will clear the warehouse and location created at the PO level or PO Receiving level from that Inventory part once the inventory reaches “0”.

Add Default warehouse automatically upon saving a part whenever new AVL is added to the part and no other warehouses are setup for the AVL - **CHECKING** this box will add a warehouse upon saving the record even if the “Allow to Auto Create Location at Receiving” box is checked.

For more information, please refer to the complete [warehouse setup](#) manual.

This is just another way we are developing ManEx with YOU in mind.

Sincerely,

David Sharp

David Sharp
Regional Vice President

ManEx, Inc.
7282 55th Ave. East
PMB 162
Bradenton, FL 34203

*If you have another approach that you think works better, [click here](#) and tell us about it.

*To add a name to this list, please reply to this email with the name and email addresses you want to add.

*To remove your name from this mailing list, please [click here](#).

*Questions or comments? Email us at cs@manex.com or call 651-344-4915